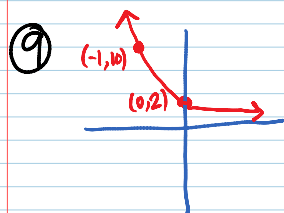
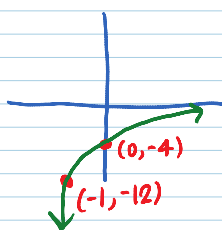


p. 489) 3-6, 9, 11, 15, 19, 26, 27, 31

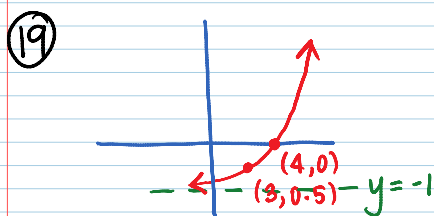
③ D ④ G ⑤ G ⑥ D



⑪



⑮ B



⑳ decay factor
is $1-r$, not r .

$$y = 500(0.98)^t$$

㉓ D

㉔ a) $y = 200(0.75)^t$; about \$84.38

c) after about 2.5 year

$$y = 200(0.75)^t$$

$$\underbrace{100}_{y_1} = \underbrace{200(0.75)^t}_{y_2}$$