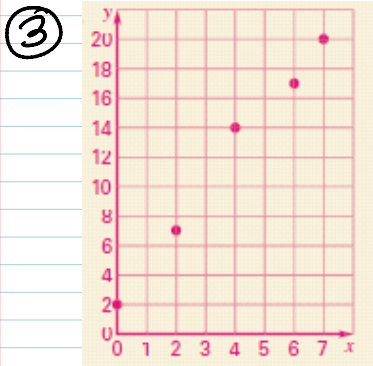
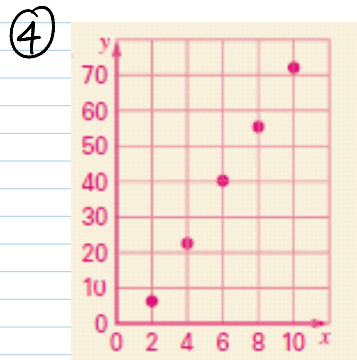


p. 338) 3-6, 18, 19, 20



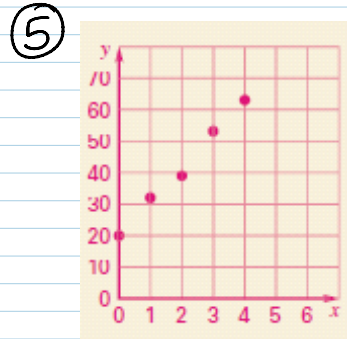
$$y = 2.6x + 2.3$$

15.3



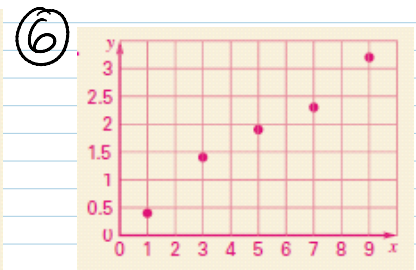
$$y = 8.2x - 10.1$$

30.9



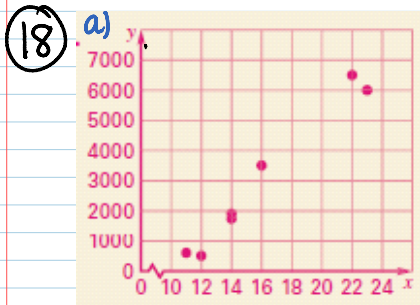
$$y = 10.7x + 20$$

127



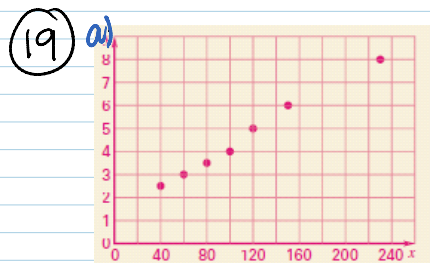
$$y = 0.33x + .22$$

3.52



$$b) y = 513.43x - 5257.78$$

c) \$ 5010.82



$$b) y = 0.03x + 1.23$$

c) 8.73 ft<sup>2</sup>

⑳ a)  $y = 31.5x + 1540.21$   
 b) 31.5 Stations/year  
 c) 2004