

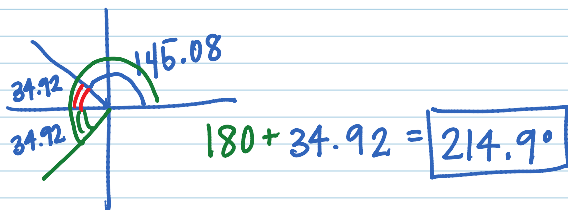
p. 878) 12-26 even, 27, 29

- (12) ≈ 0.18 , about 10.4° (14) ≈ 1.20 , about 68.9° (16) ≈ -0.64 , about -36.9°
 (18) $\approx .93$, about 53.1° (20) ≈ 214.9 (22) $\approx 171.4^\circ$ (24) $\approx 100.7^\circ$
 (26) 44.4° is not in the domain restriction $\rightarrow 135.6^\circ$
 (27) $\approx 38.7^\circ$ (29) 120°

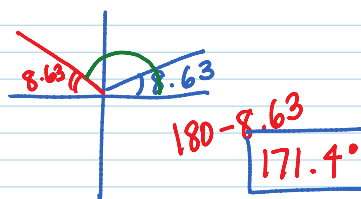
Solutions

12-18 on calc \rightarrow check MODE!

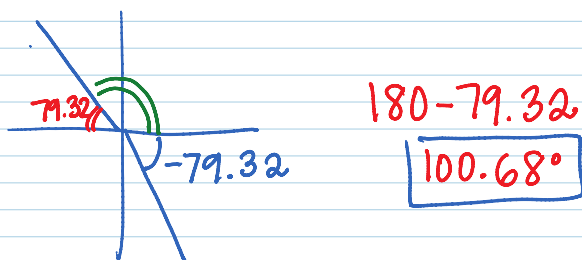
(20) $\cos^{-1}(-.82) = 145.08$



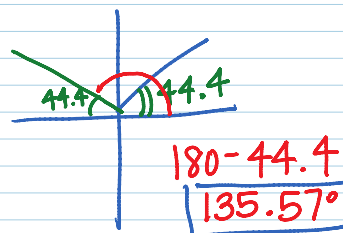
(22) $\sin^{-1}(0.15) = 8.63$



(24) $\tan^{-1}(-5.3) = -79.32$



(26)



(27) $\sin \theta = \frac{5}{8}$
 $\theta = \sin^{-1}\left(\frac{5}{8}\right)$
 $\theta = 38.68^\circ$

(29) $\cos \beta = \frac{2\sqrt{3}}{4}$
 $\beta = \cos^{-1}\left(\frac{2\sqrt{3}}{4}\right)$
 $\beta = 30$
 $30 + 90 = 120^\circ$