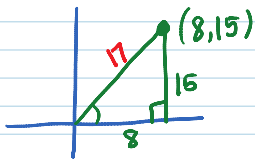


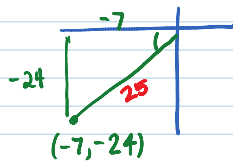
870) 3-11, 32

③



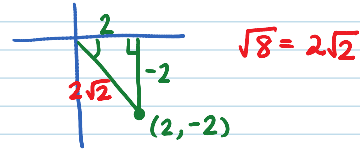
$$\begin{aligned}\sin &= \frac{15}{17} & \csc &= \frac{17}{15} \\ \cos &= \frac{8}{17} & \sec &= \frac{17}{8} \\ \tan &= \frac{15}{8} & \cot &= \frac{8}{15}\end{aligned}$$

⑤



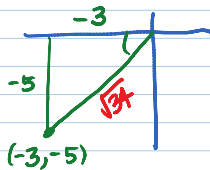
$$\begin{aligned}\sin &= -\frac{24}{25} & \csc &= \frac{25}{-24} \\ \cos &= -\frac{7}{25} & \sec &= \frac{25}{-7} \\ \tan &= \frac{24}{7} & \cot &= \frac{7}{24}\end{aligned}$$

⑦



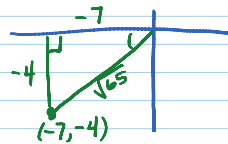
$$\begin{aligned}\sin &= \frac{-2}{2\sqrt{2}} \cdot \frac{\sqrt{2}}{\sqrt{2}} = \frac{-2\sqrt{2}}{2 \cdot 2} = \frac{-\sqrt{2}}{2} & \csc &= -\sqrt{2} \\ \cos &= \frac{2}{2\sqrt{2}} = \frac{\sqrt{2}}{2} & \sec &= \sqrt{2} \\ \tan &= \frac{-2}{2} = -1 & \cot &= -1\end{aligned}$$

⑨



$$\begin{aligned}\sin &= \frac{-5}{\sqrt{34}} = \frac{-5\sqrt{34}}{34} & \csc &= \frac{\sqrt{34}}{-5} \\ \cos &= \frac{-3}{\sqrt{34}} = \frac{-3\sqrt{34}}{34} & \sec &= \frac{\sqrt{34}}{-3} \\ \tan &= \frac{-5}{-3} = \frac{5}{3} & \cot &= \frac{3}{5}\end{aligned}$$

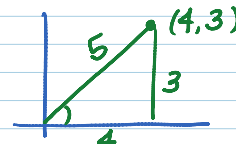
⑪



$$\tan = \frac{4}{7}$$

C

⑫



$$\tan \theta = \frac{3}{4}$$