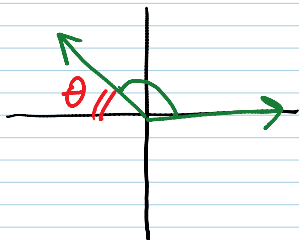


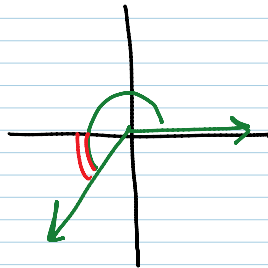
13.3: Reference Angles

A reference angle is the acute angle formed by the terminal side of θ & the X-axis.

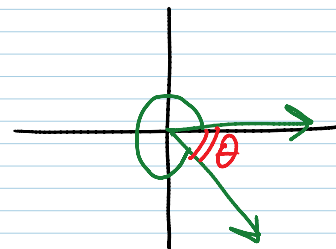
Quadrant II



Quadrant III

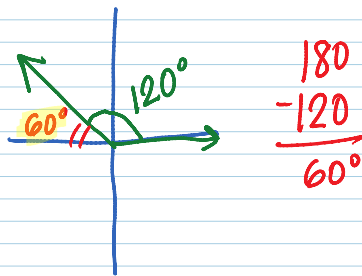


Quadrant IV

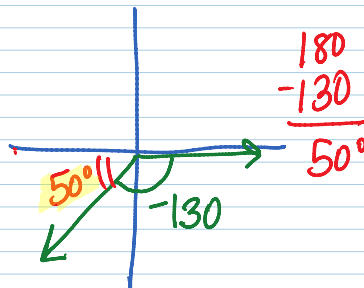


Find the reference angle for:

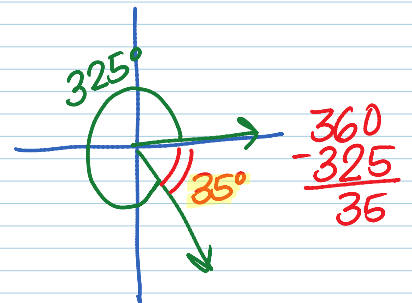
① 120°



② -130°

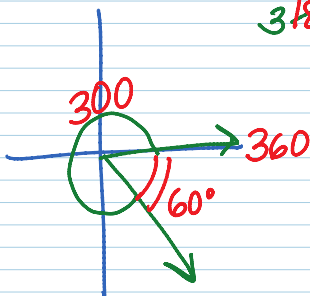


③ 325°

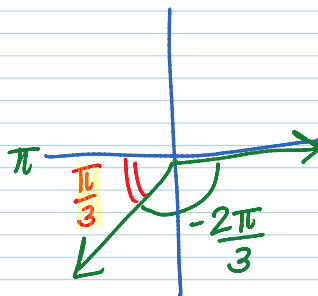


④ $\frac{5\pi}{3}$

$$60^\circ \times \frac{\pi}{180^\circ} = \boxed{\frac{\pi}{3}}$$



⑤ $-\frac{2\pi}{3}$



$$\pi = \frac{3\pi}{3} - \frac{2\pi}{3} = \boxed{\frac{\pi}{3}}$$

⑥ $\frac{3\pi}{4}$

