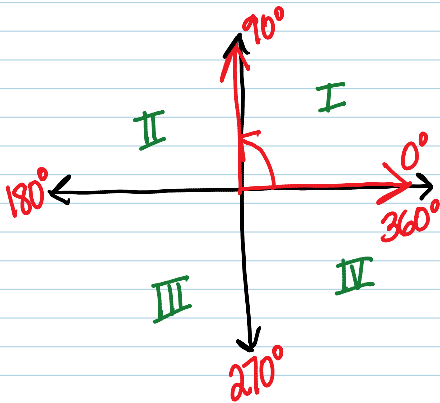


13.2: Define General Angles

Angles in Standard Form:

initial side lies on the positive axis

terminal side rotates about the origin (0,0)

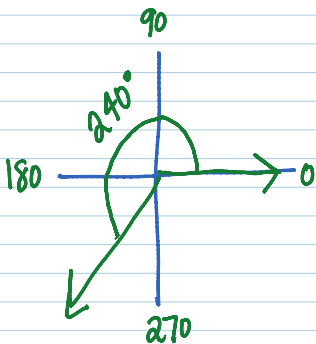


positive
angles move
counterclockwise

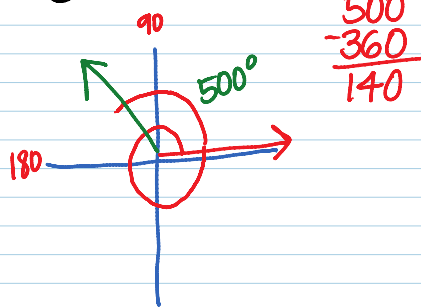
negative
angles move
clockwise

Draw an angle with the given measure in standard position.

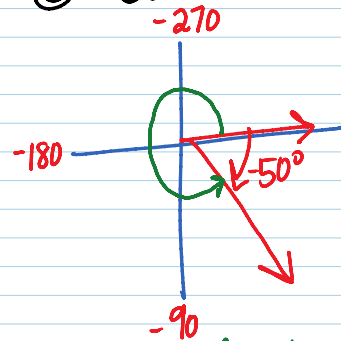
① 240°



② 500°



③ -50°



Coterminal Angles: 2 angles with the same initial & terminal sides BUT DIFFERENT MEASURES

You can find a coterminal angle by:

ADD OR SUBTRACT
MULTIPLES
of 360

Find a positive & negative angle coterminal with the angle

below:

1) 65°

positive

65°

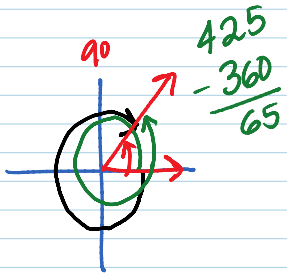
$\frac{+360}{}$

425°

425

$\frac{360}{}$

785°



2) 230°

positive

590°

negative

-130°

negative

65

$\frac{-360}{}$

-295°

3) 740°

positive

740

$\frac{360}{}$

1100°

740

$\frac{-360}{}$

380°

380

$\frac{-360}{}$

20

20

$\frac{-360}{}$

-340°