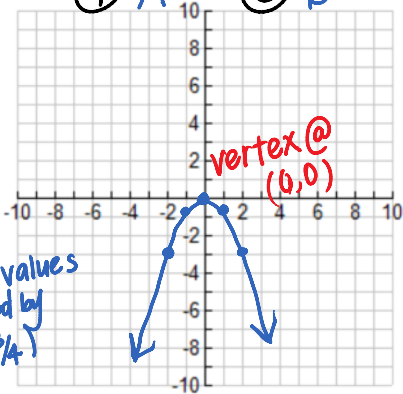


p. 632) 3-5, 7, 12, 16, 22, 25, 31, 37

③ C ④ A ⑤ B

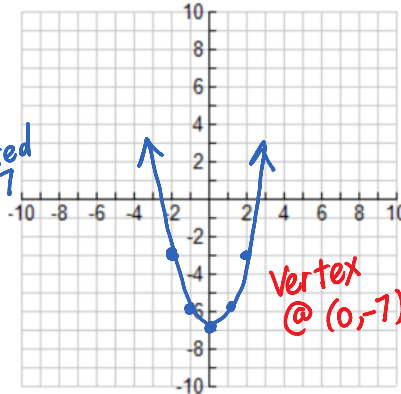
⑫

- graph is flipped
- graph is wider (y-values multiplied by $-\frac{3}{4}$)



⑬

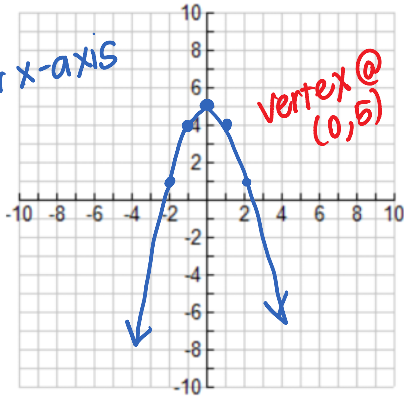
- graph shifted down 7



⑳ C

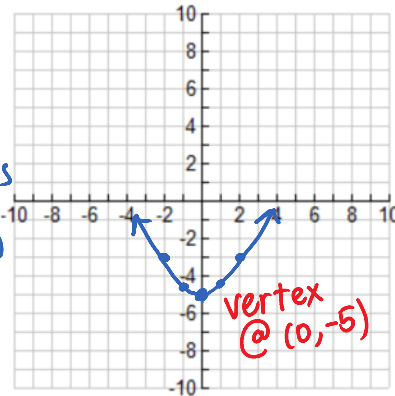
㉕

- flip over x-axis
- $\uparrow 5$



㉓

- graph is wider (y-values mult. by $\frac{1}{2}$)
- $\downarrow 5$



㉑

$$\begin{aligned}
 y &= ax^2 + c \\
 y &= ax^2 + 3 \\
 9 &= a(-1)^2 + 3 \\
 9 &= a + 3 \\
 \underline{-3 \quad -3} \\
 6 &= a
 \end{aligned}$$

$$\boxed{y = 6x^2 + 3}$$

